

ON 56" CAB TO AXLE ONLY
ENLARGE EXISTING 1/2" HOLE TO 5/8" DIAMETER. BOLT
ANGLE BRACKET TO FACTORY FRAME RISER USING
TWO 5/8x1-3/4 BOLT WITH REINFORCING PLATES.

TUBING FILLER

BOLT REAR LEVEL LOK
ASSEMBLIES IN PLACE USING
3/4x4-1/2 BOLTS

DETAIL A
SCALE 1 : 5

ENLARGE EXISTING 1/2" HOLE TO 5/8"
DIAMETER. BOLT FRONT LEVEL LOK TO
FACTORY FRAME RISER USING TWO 5/8x1-
3/4 BOLT WITH REINFORCING PLATES.

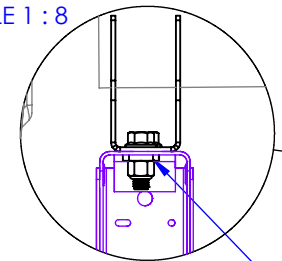
BOLT STRAPS ON W/ 1-1/2 TUBING
FILLER USING 3/4x5-1/2 BOLT WITH
WASHER

GENERAL INSTRUCTIONS AND CAUTIONS

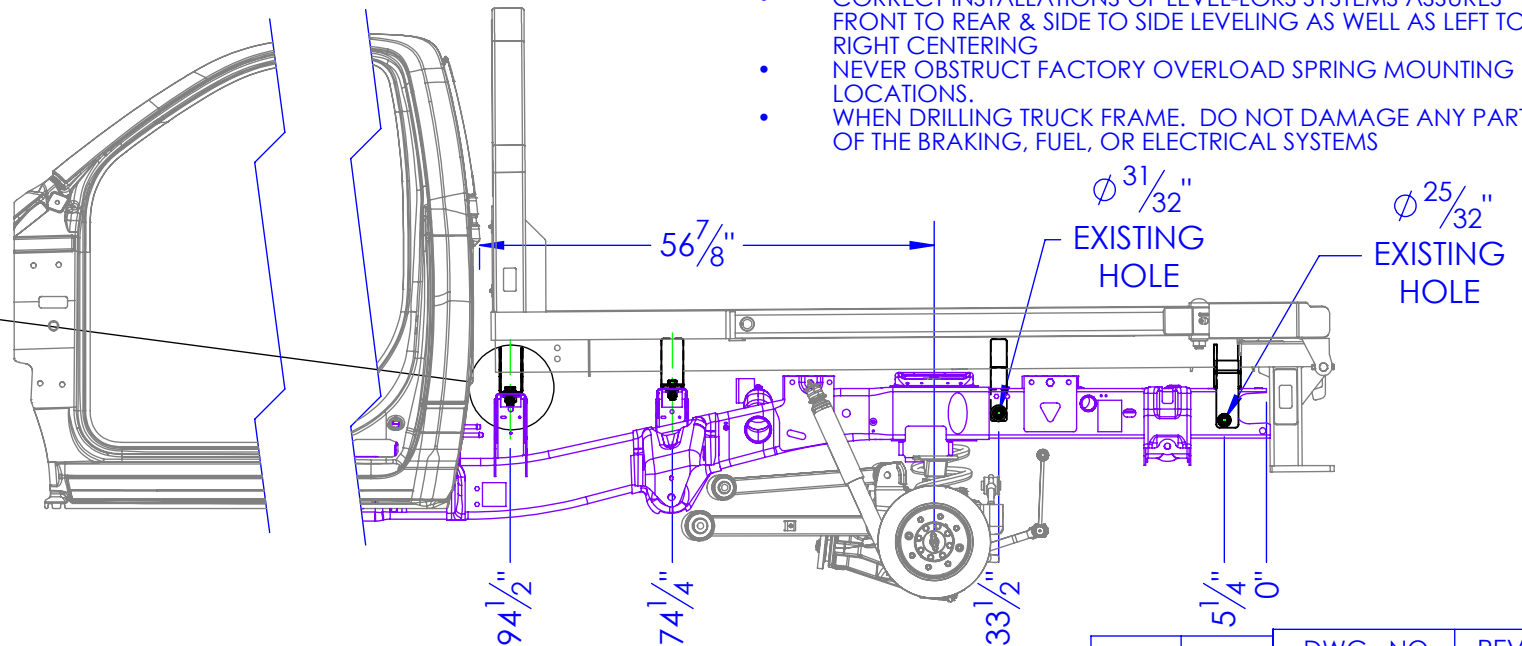
NOTES:

- ALWAYS DISCONNECT TRUCK BATTERY BEFORE WELDING
- ATTACH WELDER GROUND ONLY TO BED NOT TRUCK FRAME
- NEVER WELD TO FRAME OF TRUCK
- CORRECT INSTALLATIONS OF LEVEL-LOKS SYSTEMS ASSURES FRONT TO REAR & SIDE TO SIDE LEVELING AS WELL AS LEFT TO RIGHT CENTERING
- NEVER OBSTRUCT FACTORY OVERLOAD SPRING MOUNTING LOCATIONS.
- WHEN DRILLING TRUCK FRAME. DO NOT DAMAGE ANY PART OF THE BRAKING, FUEL, OR ELECTRICAL SYSTEMS

DETAIL B
SCALE 1 : 8



REINFORCING TAB



DRAWN	NAME	DATE	DWG. NO.	REV
HEATH		4/30/2014	90-0826 B	B